



WELCOME PACK

WELCOME

Welcome to St John's!

We are a lively Anglican church in Hartley Wintney committed to growing together as followers of Jesus, as well as reaching out to the community around us and serving others further away.

We believe that the word of God is central and vital to all we do as a church. We also believe in the powerful work of the Holy Spirit.

As a church we long to see everyone know the fullness of God's love in Jesus through our
WELCOME, WORSHIP, WORK & WITNESS.

Contact Us

St John's Church, Fleet Road, Hartley Wintney, RG27 8ED
The Office: 01252 842215 | office@stjohnshw.org.uk
Visit: www.stjohnshw.org.uk

Follow us - [stjohnshw](https://www.stjohnshw.org.uk)



Based on Jesus' words in John 10:10
'I have come that they may have life, and have it to the full.'
We long to be a people who are....

Grace-full

because we have received mercy, we...

Know Jesus as our friend and saviour
Love, forgive and seek to be reconciled to each other
Reach out to love and serve our community

Thank-full

for God's goodness, we...

Give of our first and best to God through our finances, time and gifts
Share our faith courageously and lovingly
Practise generous hospitality

Faith-full

to God in all of our lives, we...

Trust the Bible as the word of God and apply it to our lives
Seek God in prayer and to be filled by the Holy Spirit
Grow as disciples in loving and supportive small groups

Joy-full

in all circumstances, we...

Join together in wholehearted worship
Recognise God's presence in good times and in bad
Celebrate belonging together as a diverse multi-generational family

Hope-full

for the future, we...

Expectantly wait for signs, miracles and kingdom growth
Are certain that nothing separates us from God's love
Can be confident in the promise of eternal life

SERVICES

9:00AM SERVICE

9:00am Service | Sunday Mornings | Traditional

We hold a traditional communion service at 9:00am with liturgy from Common Worship and hymns accompanied on the organ. Following the service coffee, tea and biscuits are served in the foyer. You're welcome to stay and enjoy fellowship with others.

10:45AM SERVICE

10:45am Service | Sunday Mornings | Contemporary

We hold a Contemporary service at 10:45am. This service is accompanied by our worship band and includes resources and activities for children and young people. We often have our Coffee Shop open after the service, so hang around and get connected! This service is usually live streamed.

MID-WEEK COMMUNION

11:15am | Wednesday Mornings | Holy Communion

On Wednesday mornings at 11:15am, we offer a short 'said' communion service, open for all and especially for those who are unable to access online services or larger gatherings.

PRAYER

An essential part of Church life is being in relationship with God and talking to Him, hearing from Him and offering Him our dreams, struggles, joy and pain in prayer.

FIRST SUNDAY'S @ 7

7pm | First Sunday Evening of the Month

Worship, listen, share, pray – join us for one hour at 7pm on the first Sunday of each month as we gather together to listen to what God is saying to us at this time and to pray.

MORNING PRAYER

9am | Every Weekday Morning

We have a regular rhythm of prayer every weekday morning 9am – 9:30am. We start by looking at scripture and then lead into praying for our church community, the village and the wider needs of the world. Prayer mornings happen on Zoom, please contact the office for more details.

WEDNESDAY MORNINGS

7am | Every other Wednesday Morning

An hour of contemporary reflection every other Wednesday morning. Pray | Seek | Praise | Worship | Thank | Read | Reflect Spend time with God, in whatever way that looks for you. For more info please see our website.

COFFEE VOUCHER

This one's on us.....



**GET
COFFEE
GET
CONNECTED**

COFFEE SHOP
COFFEE SHOP
COFFEE SHOP
COFFEE SHOP
COFFEE SHOP

COFFEE VOUCHER

We would love to meet you!

**A FREE SPECIALITY COFFEE
OR
EQUIVALENT DRINK EACH**



Hand to one of our coffee shop team to redeem

COFFEE SHOP

Our coffee shop is a welcoming place for our local community, serving great fairtrade coffee and homemade cakes.

It is a regular gathering place for groups of friends and individuals alike.

Based in the Church Centre at St John's, we offer a range of affordable specialty and regular coffees, teas and hot chocolate (with the option of an upgrade to a 'hot chocolate mountain') as well as soft drinks.

Every day there is also a choice of high quality home-made cakes available alongside the regular chocolate bars and cookies and on Saturdays we also serve seriously good value bacon and egg rolls!

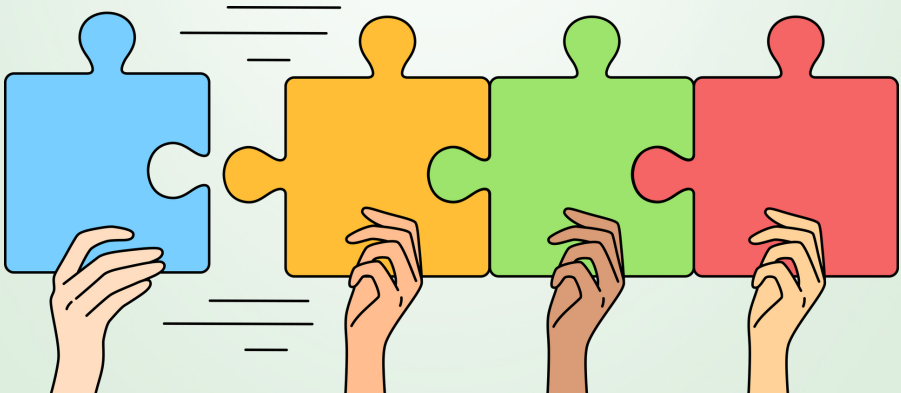
HOURS

Open Monday to Sunday

Hours will vary, please see our website

GET CONNECTED

We know that being in community is important and we would love to meet you, whether that's: face to face, over the phone, via email or on social media, there are so many ways for us to get to know you. Please ask any questions you may have and please get in touch if you'd like any further information. We invite you to fill in the form on the reverse side with your details, to begin the conversation...



JOIN OUR COMMUNITY

By filling in this form, you are consenting to St John's Church holding and processing your personal data in accordance with the law. Your data will be used to keep you informed of the services, events and activities at St John's Church. We will never pass on your details to a third party without your permission. You can withdraw or change your data at any time.

Personal Information

Name (s):

Address:

Postcode:

Email (s):

Phone No(s):

Communicating with you

I'm happy for you to use the information from this form to keep in contact with me about events and activities in the Church or by our E-News letter.

I'm happy for your to contact me by: Email Phone

Please tell me more about

- | | | | |
|-----------------------------------|---------------------------------|----------------------------------|--------------------------------------|
| <input type="checkbox"/> Services | <input type="checkbox"/> Prayer | <input type="checkbox"/> Serving | <input type="checkbox"/> Giving |
| <input type="checkbox"/> Kids | <input type="checkbox"/> Youth | <input type="checkbox"/> Alpha | <input type="checkbox"/> Life Groups |

For office use only.
Date received:

We look forward to meeting you!

PASTORAL CARE

HOW CAN WE HELP?

Our clergy, staff and pastoral teams are always willing to offer support through the challenges of life. We have a pastoral team offering a friendly chat, prayer support, hospital visits & bereavement care. We also offer practical help where we can with things such as lifts, shopping, DIY, gardening and meals.

Whatever your need, please do get in touch with our
Pastoral Care Coordinator.

Email: pastoral@stjohnshw.org.uk

One of the ways
we aspire to
demonstrate God's love
is through our care
for one another
and our local
community.



GIVING

We want to be a generous presence in our local community through our people and buildings and be a big-hearted partner to other charities and churches, always reaching out to others with God's love.

There are many different ways for individuals to give.

GIVING TIME

Every week St John's is a meeting place for young families, fitness classes, courses, people seeking friendship and those seeking refuge. Giving time as a way of serving the community through welcoming people, cleaning, serving coffee, volunteering to help lead a group or course is a very precious form of giving.

GIVING FOOD AND CONSUMABLES

We partner with Hart Foodbank and the Hope Hub, collecting food donations in a our Church Centre Foyer. Every donated item is regularly made available for people in need.

GIVING FINANCIALLY

Most of our funding comes from donations from individuals and we are so thankful for this generosity which enables us to bring practical & spiritual help across all areas of the church, the community and further afield.

It costs approximately £7,000 per week to support the work of St John's. All donations, of any size, are much appreciated.

We encourage anyone who calls St John's Church home to consider giving regularly to the work of the Church. The best way to do this is by being a part of the Parish Giving Scheme. You'll find a PGS card in this pack. For more information email: treasurer@stjohnshw.org.uk



LIFE GROUPS



For those who regularly attend St John's, we encourage you to join a Life Group.

Life Groups offer a place of belonging, where we can support each other, meeting regularly to socialise and share in bible study, prayer and worship.

As we continue to grow as a Church and across multiple services, small groups are a great place to know others and be known.

For more information on why we value Life Groups, what the various groups are and where they currently meet, or to simply contact us about Life Groups please visit our website:

<https://stjohnshw.org.uk/life-groups/>



CHILDREN & YOUTH

blaze
sparks

SPARKS

10.45 Service | Sunday Mornings | 0 – 4 years old

Space for all under 5's to be with parents or carers and members of our Sparks team.

BLAZE

10.45 Service | Sunday Mornings | Year R – year 6

Blaze is a fun packed session with games and craft, seeking to ignite children's faith and explore the Bible. Blaze is open to all children in Yr R through to Yr 6.

disco

10:45 Service | Sunday Mornings | Years 7 – 9

After all age worship we gather in the youth room and learn more about Jesus, who He is and what that means for our lives. At Disco there's games and informal discussions around different topics and life issues.

enthuse

7pm – 8:30pm | Sunday Evenings | Year 10 – 13

We gather every Sunday evening in the foyer in St John's Church Center and enjoy spending time with each other and God. Some weeks we read & study the bible, others we catch up with each other over food and others we join with the young adults Life Group for 'Late night worship' in the church. If you are yr 10-13 come and try it out – there are always snacks & games too!!

YOUTH CAFE

Tuesdays 3:30pm – 6pm

For those in years 7 – 13

A drop in Youth Cafe, play games, chat with friends or even study! Youth are welcome to stay as long as they like, free food and drinks also available.